



600x1200mm



Matt Series

COLLECTION '23

# INTRODUCTION

We are bringing in aesthetically graceful tiles with vibrant designs of Matt finish to dazzle every surface. It is going to raise the benchmark of interiors and exteriors of every place as we are about to deliver tiles whose quality is not known before.



# INSPIRATION DESIRE & QUALITY

Drawing influence from quarries, we meticulously designed tiles with intricate patterns of top-notch quality to provide a pleasing experience to every client and take inspiration from nature in its design.



## DRIVING FORCE

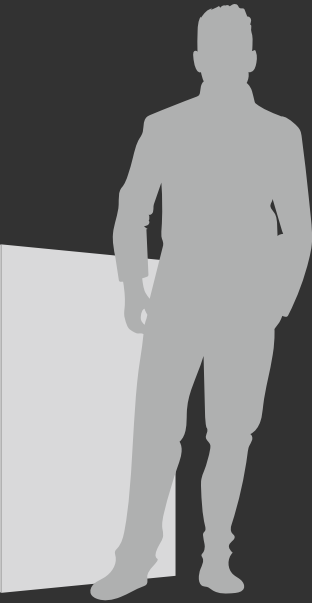
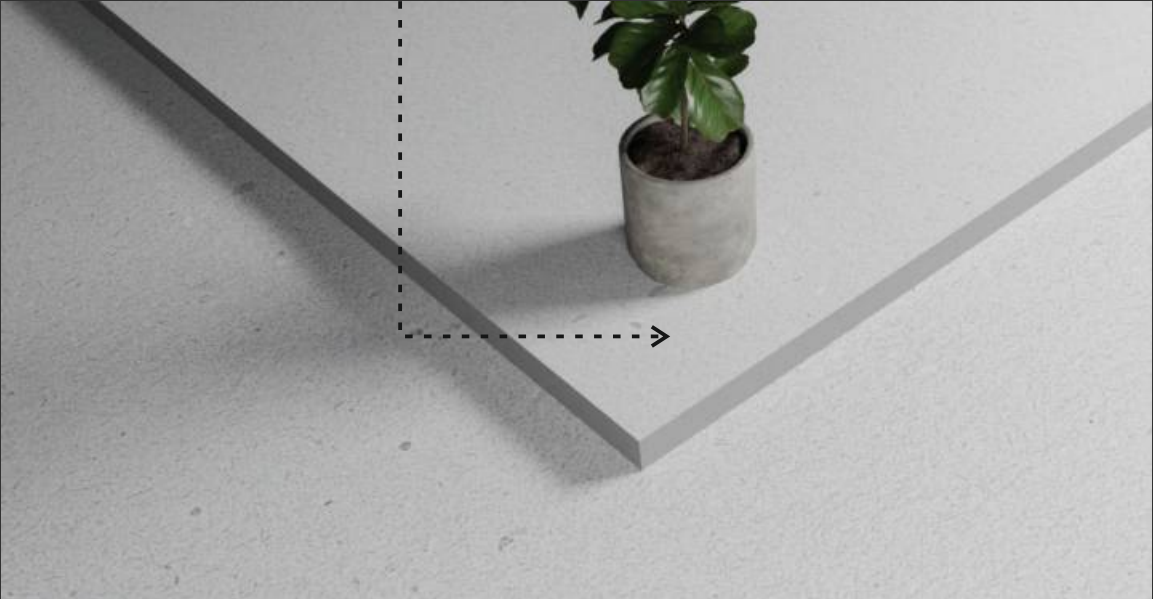
We have always believed in delivering the finest attributes of tiles and making sure that we resemble nature in its making. This belief becomes our driving force in crafting tiles that have the essence of nature and marble quarries signify its elements.

Characterized by intricate veins, unique patterns, and a spectrum of hues, marble quarries have been a source of inspiration for artists and architects for centuries. We have taken the leaf out of marble quarries in the making of our tiles in the design patterns and it acts as a driving force for us to create a fabulous finish surface that gives everyone the feel of marble in the tile itself. It's not just about tiles; it's about bringing the essence of marble quarries into your surroundings, creating a harmonious blend of nature's beauty and human craftsmanship

The patterns embedded in our tiles tell a story of the earth's wonders, translating the grandeur of marble quarries into a tangible, stunning finish. With every tile, we strive to replicate the unique elements of marble, providing spaces with a touch of opulence and the unmistakable feel of natural marvels

# SIZE/ FORMAT

<u>Size</u> <b>60x120cm</b>	<u>Finish</u> <b>Matt</b>	<u>Thickness</u> <b>9mm</b>
--------------------------------	------------------------------	--------------------------------




## MATT FINISH

Discover a world of subtle sophistication with our Matt Finish Tiles. These tiles redefine modern aesthetics by providing a refined, non-reflective surface that complements various design styles. The velvety texture of the matt finish not only adds a touch of understated elegance but also contributes to a smooth, tactile experience.

Ideal for creating serene living spaces, these tiles bring a sense of calm and tranquillity to any room. Their versatility allows them to seamlessly integrate into both contemporary and classic designs, making them a perfect choice for floors and walls alike. The muted finish minimizes glare and enhances the overall warmth of the space.

With our Matt Finish Tiles, elevate your interiors to a new level of sophistication, where style meets subtlety, and every surface becomes a canvas for timeless beauty. Experience a blend of aesthetics and practicality, as these tiles not only captivate the eye but also offer durability and easy maintenance. Redefine your living spaces with the muted allure of matt finish tiles.

# FEATURES

 <b>Easy to Clean</b>	 <b>Impact Resistance</b>	 <b>Easy Installation</b>
 <b>Fire Resistance</b>	 <b>Chemical Resistance</b>	 <b>Frost Resistance</b>

Our tiles not only brighten up the eyes through their radiance and give an aesthetically pleasing experience but also stand the test of time as it is fireproof, impact-resistant, chemical-resistant, and easy to clean making them an ideal and smart choice for any environment. Apart from that it is also frost-resistant which signifies its sheer strength and durability. In addition to this, it is also very easy to install and the process doesn't take much effort or time which makes it perfect for your every need.



# RICHNESS THAT YOU CAN FEEL

## The Applications Area which applicable in Wall and Floor



The ravishing look of our Matt finish tiles creates an awe-inspiring gaze and it can be the unmatched choice for your flooring needs.

A dazzling Matt finish is going to be your go-to choice for a wall to captivate everyone's attention.

# VERSATILE SPACE APPLICATION

Our tiles are pretty much applicable everywhere. Our tile is known for its versatile character due to its sturdiness and durability along with lustrous looks. It is going to be the legit choice for every home across the place as it has aesthetic appeal and sheer strength.

Our tiles are also 1st choice in outdoor places or places of high traffic and have more chances of strain. Airports, Industry, Railway platforms, etc have a high rush of people and our tile is go- to choice for them. Your hotel and restaurant to attract people so our durable and dazzling tiles are your ideal choice. Also, gym, hospitals, halls, etc needs our tiles.

 Residential	 Corporate Building	 Gymnasium	 Halls & Corridors
 Hospitals	 Airports	 Hotels, Cafes & Restaurants	 Industrial



## ATHENS CHOCO



Random - 6

## ATHENS TAUPE



Random - 6



FULLY DIGITAL  
TECHNOLOGY

①

ATHENS  
CHOCO

②

ATHENS  
TAUPE



## ATHENS DOVE



Random - 6

## ATHENS GRIS



Random - 6



FULLY DIGITAL  
TECHNOLOGY

①

ATHENS  
DOVE

②

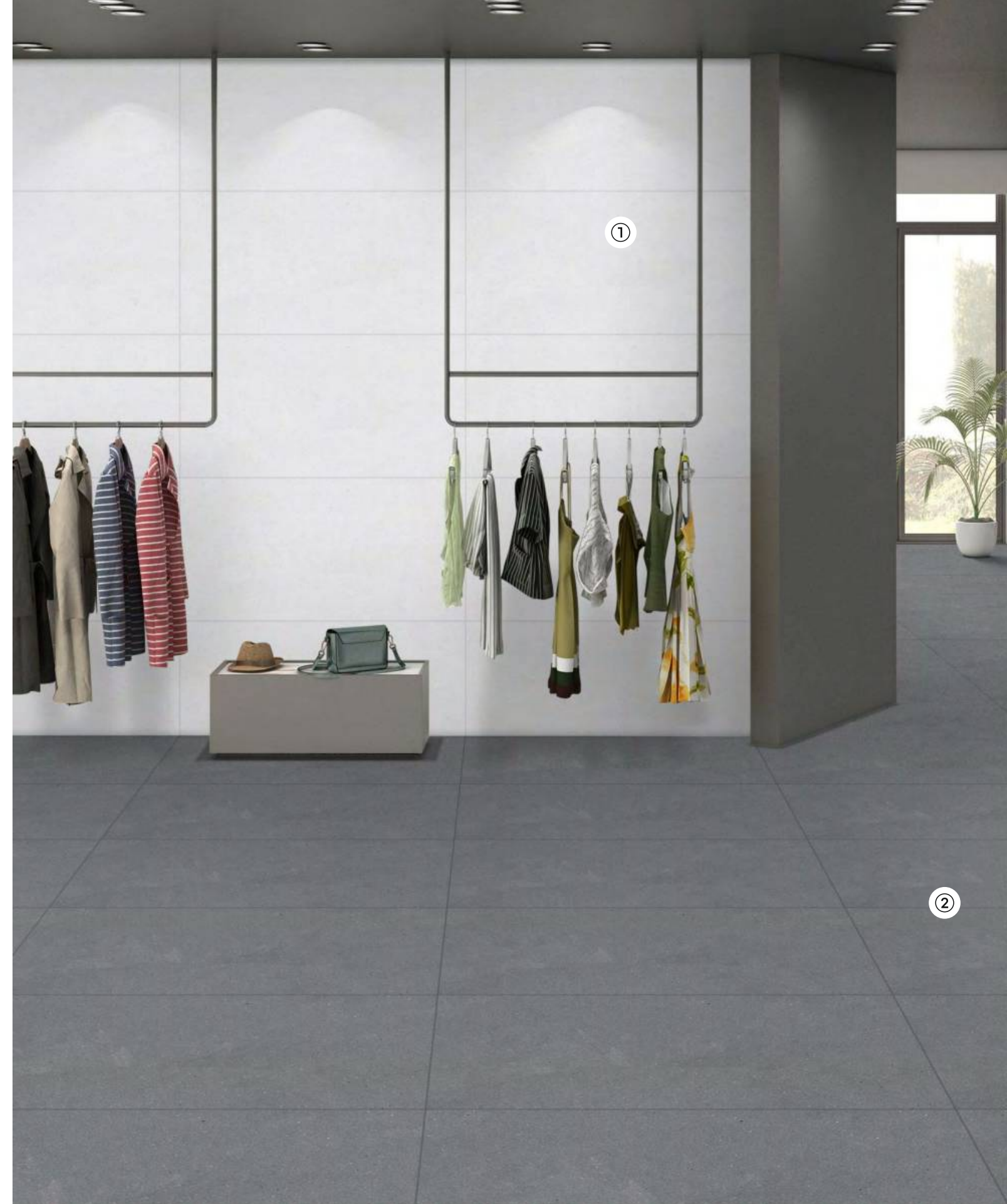
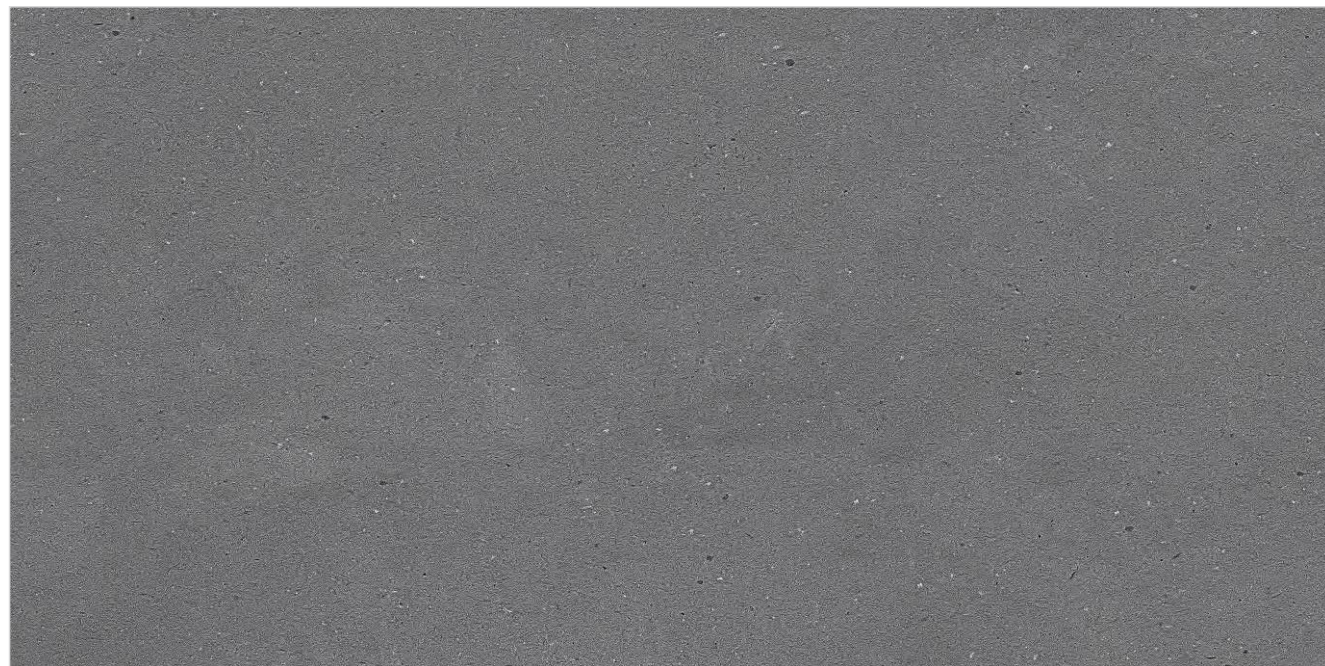
ATHENS  
GRIS



## EDEN LIGHT GREY



## EDEN GREY

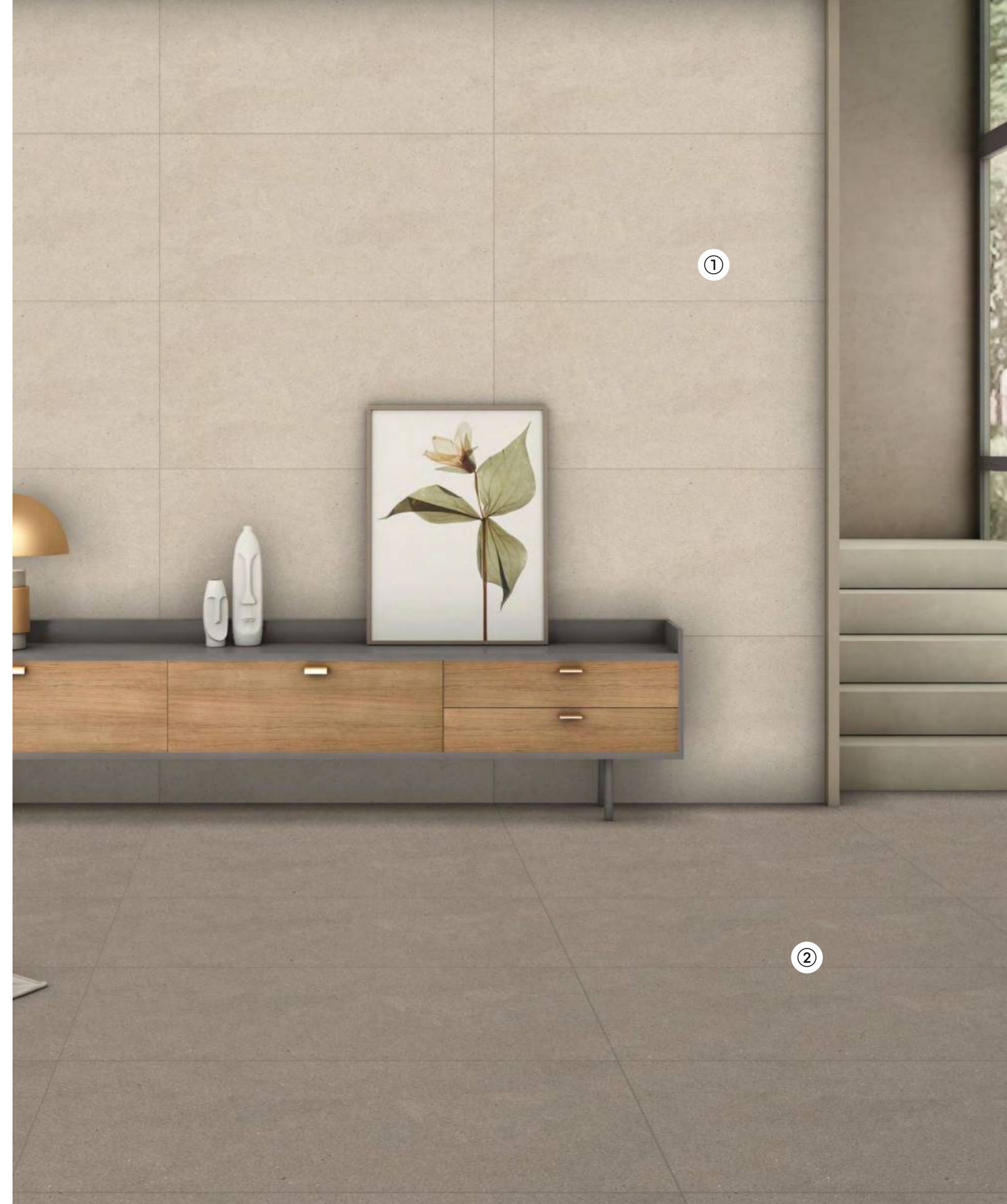




## EDEN CREMA

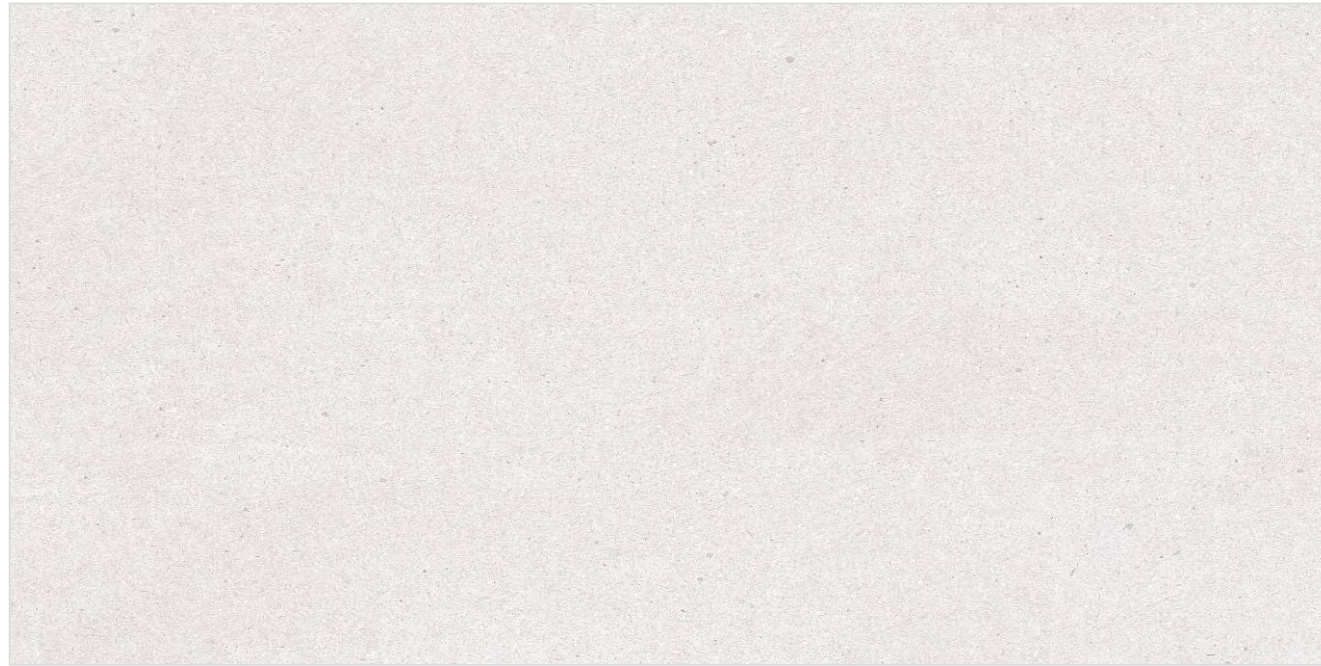


## EDEN BROWN





## EDEN BIANCO



## HAZZLE BIANCO



Random - 6



FULLY DIGITAL  
TECHNOLOGY

①

HAZZLE BIANCO



60X120 CM | 24"X48" | 2'X4'

MATT FINISH

9 mm

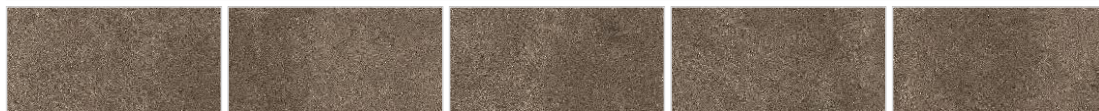
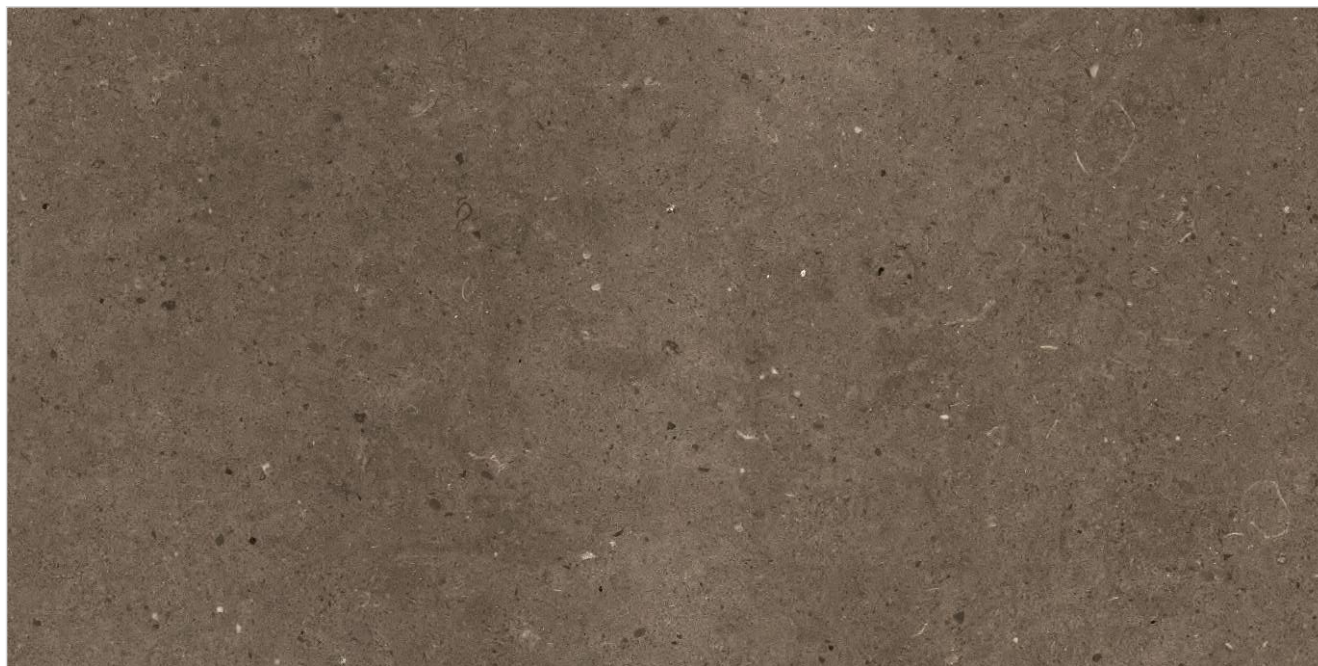
GLAZED VITRIFIED TILES

## HAZZLE SLATE



Random - 6

## HAZZLE BROWN



Random - 6



FULLY DIGITAL  
TECHNOLOGY

①

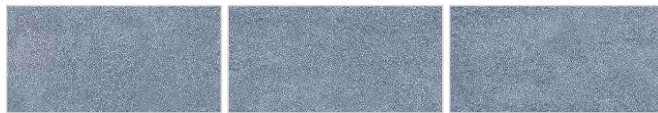
HAZZLE  
BROWN

②

HAZZLE  
SLATE

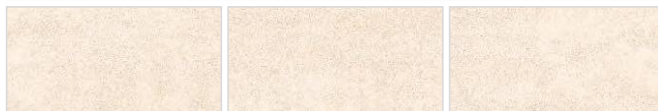
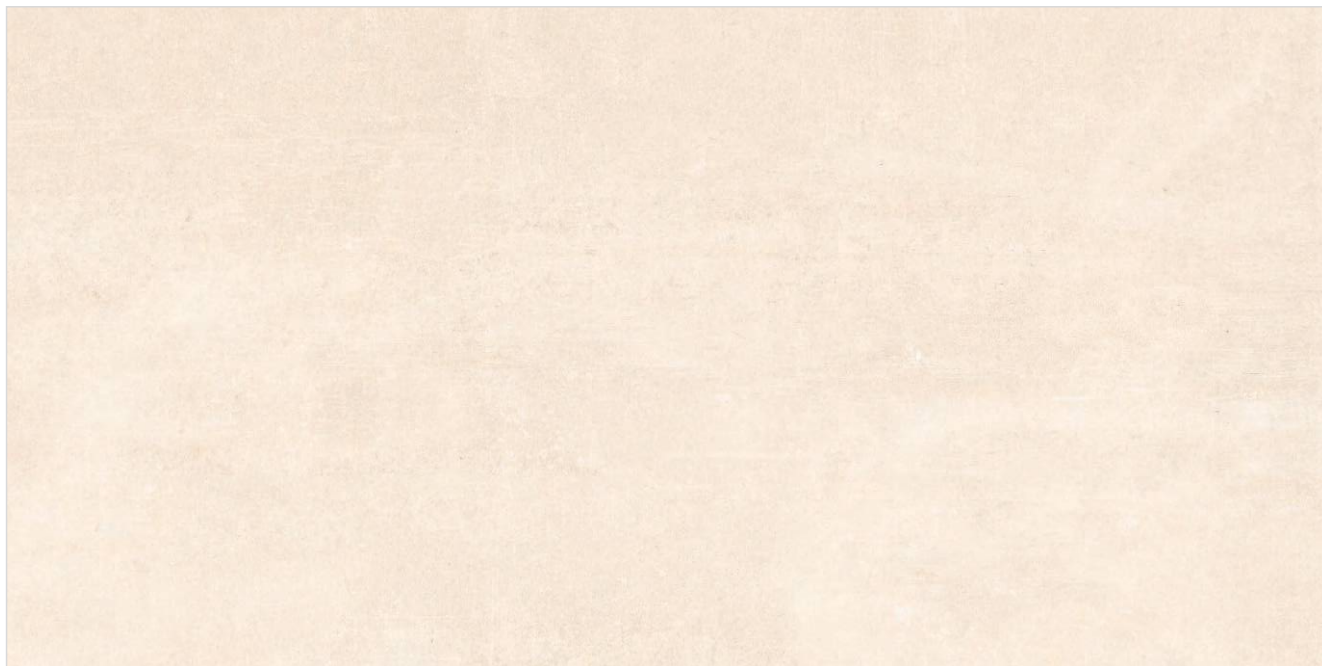


## GIALLO BLUE



Random - 4

## GIALLO CREMA



Random - 4



FULLY DIGITAL  
TECHNOLOGY

①

GIALLO BLUE



## GIALLO GREY

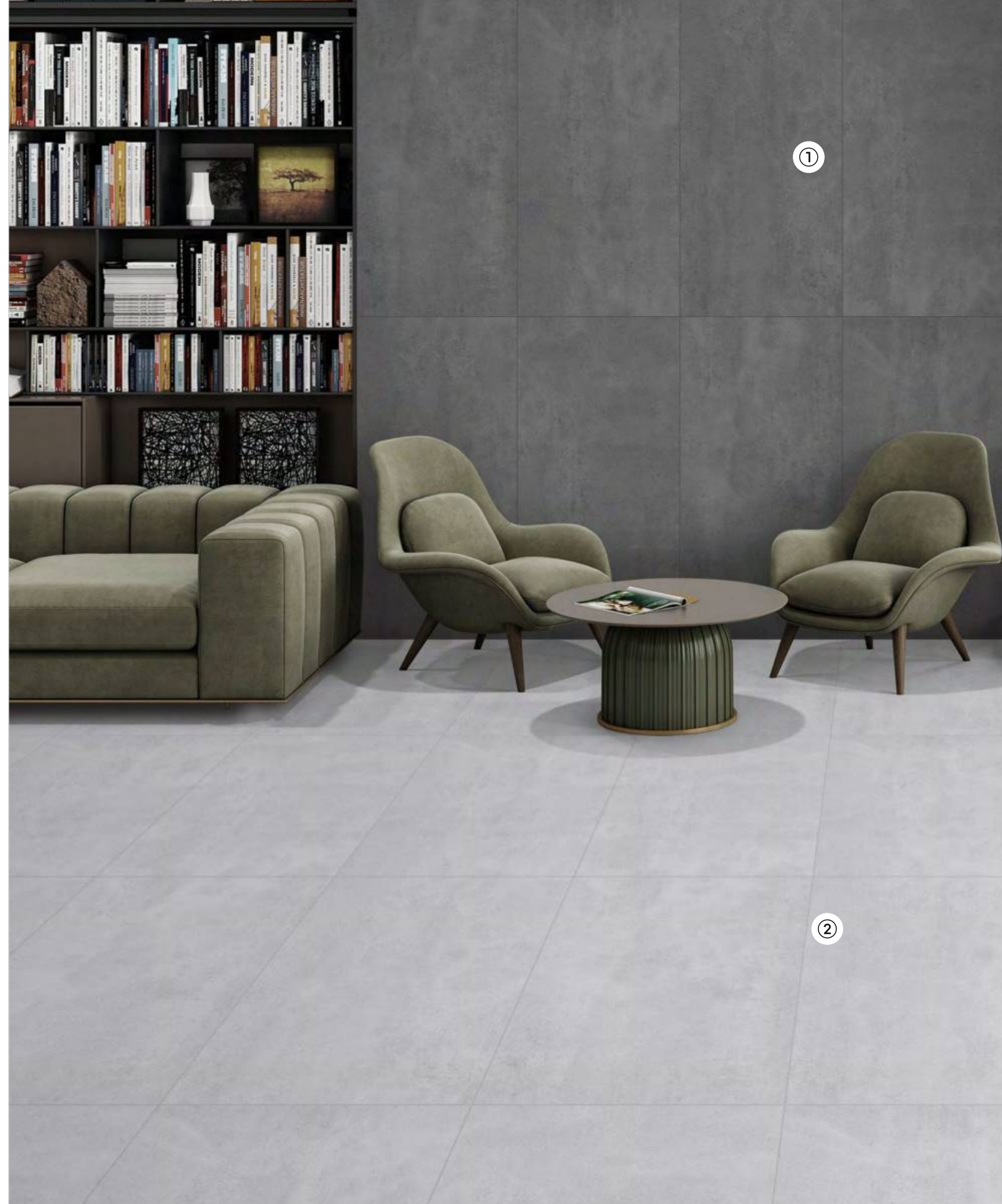


Random - 4

## GIALLO GRIS



Random - 4



FULLY DIGITAL  
TECHNOLOGY

①

GIALLO  
GRIS

②

GIALLO  
GREY



60X120 CM | 24"X48" | 2'X4'

MATT FINISH

9 mm

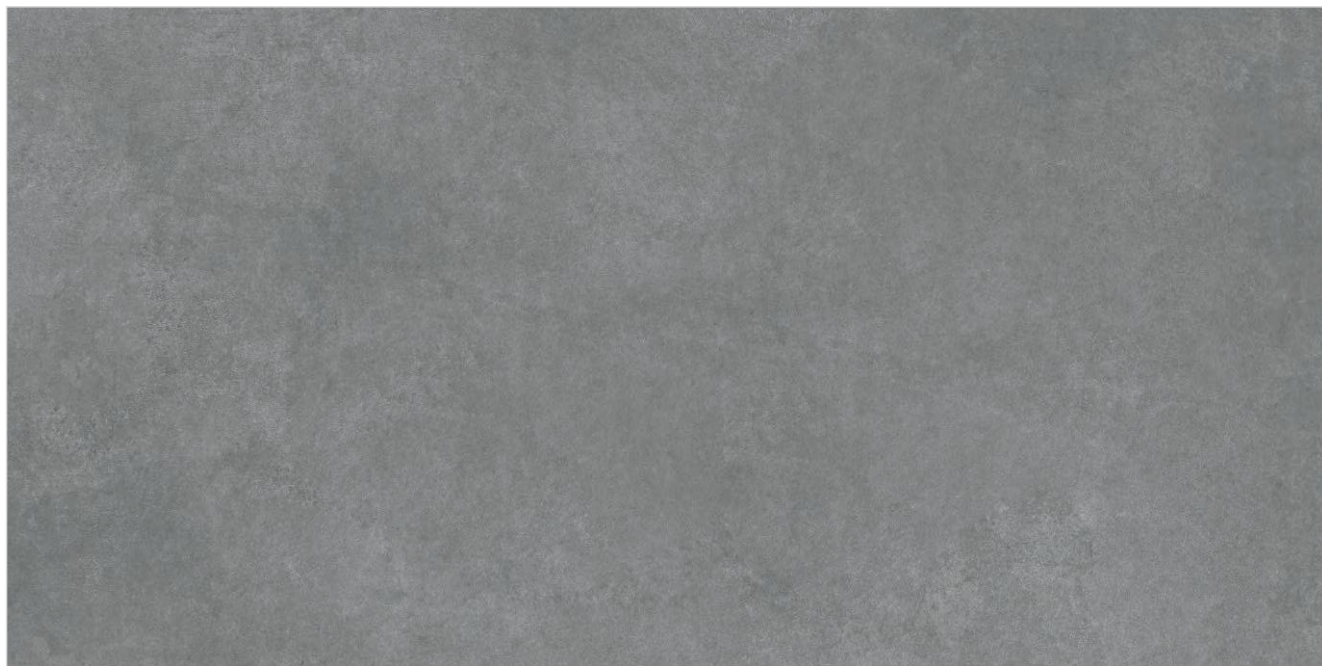
GLAZED VITRIFIED TILES

## NORWAY BIANCO



Random - 5

## NORWAY GRIS



Random - 5



FULLY DIGITAL  
TECHNOLOGY

①

NORWAY  
GRIS

②

NORWAY  
BIANCO



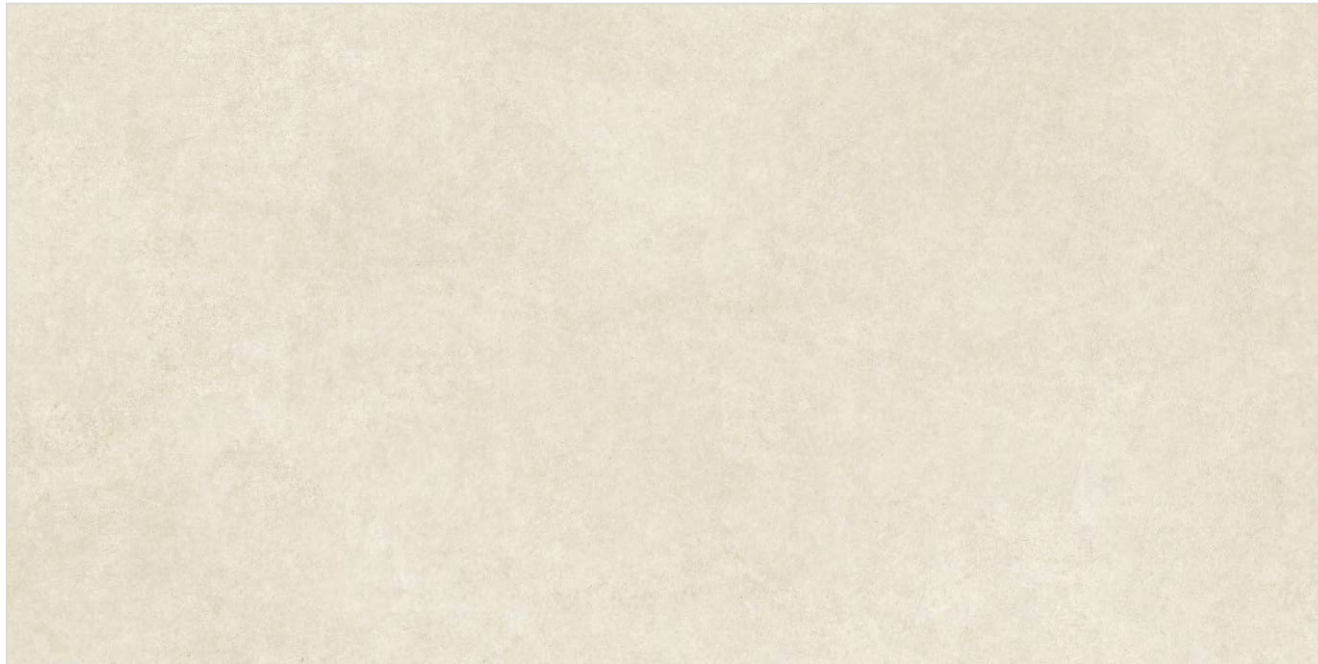
60X120 CM | 24"X48" | 2'X4'

MATT FINISH

≥ 9 mm

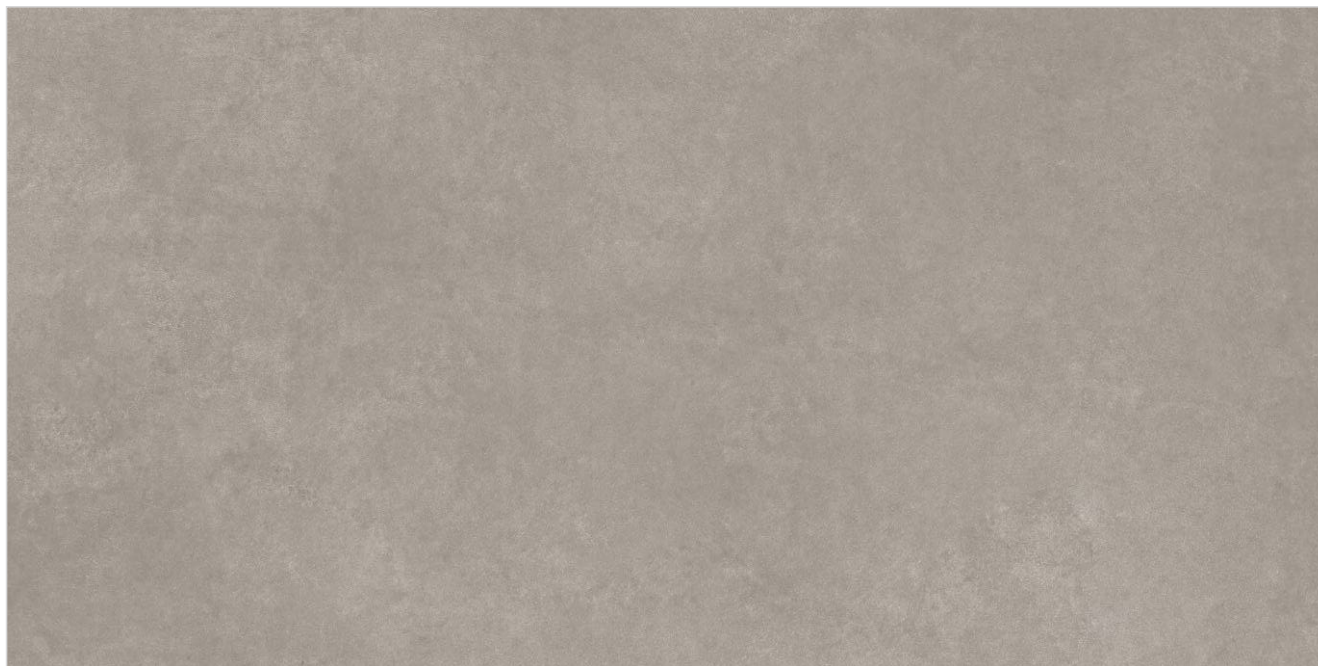
GLAZED VITRIFIED TILES

## NORWAY IVORY

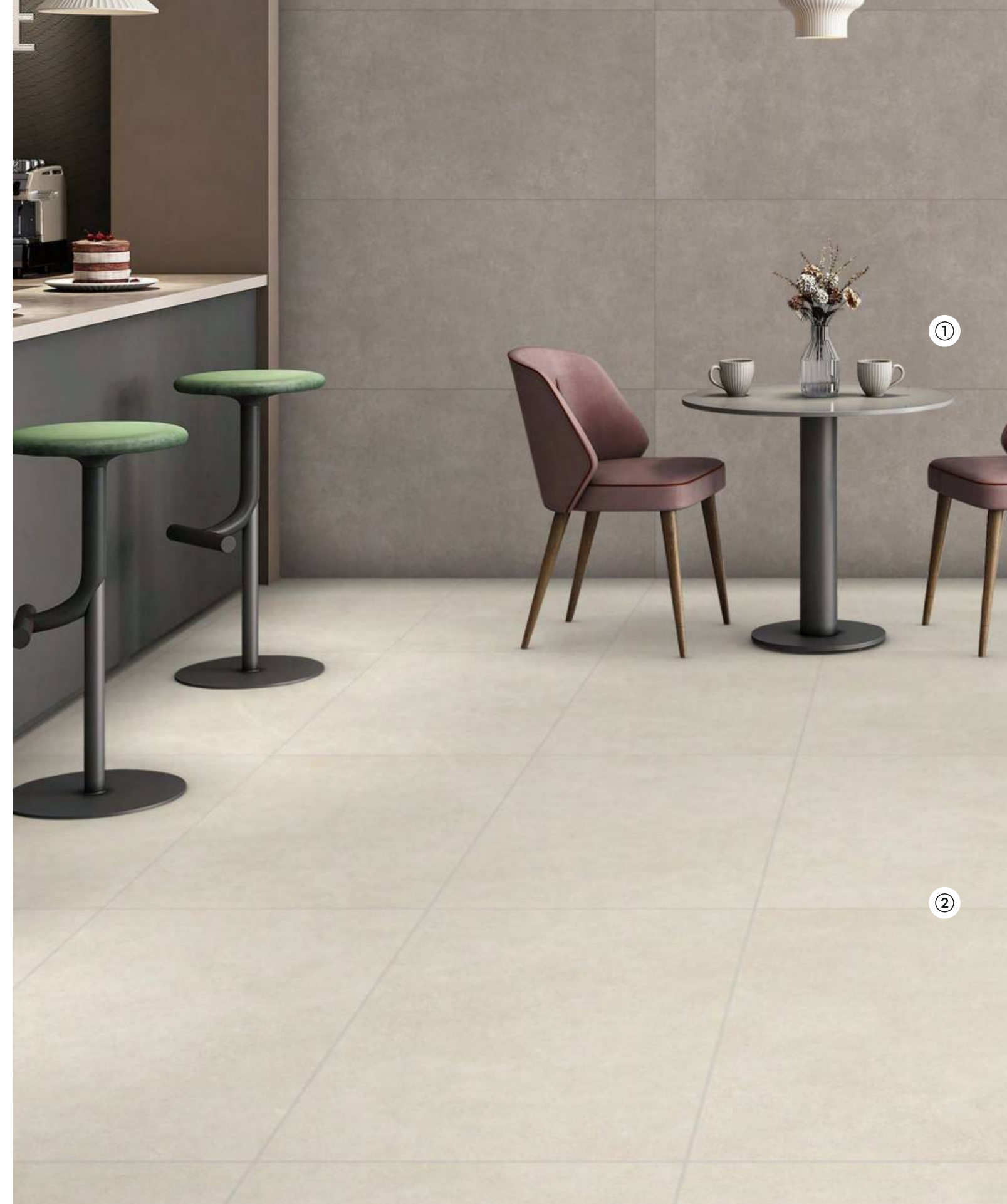


Random - 5

## NORWAY TAUPE



Random - 5



FULLY DIGITAL  
TECHNOLOGY

①

NORWAY  
TAUPE

②

NORWAY  
IVORY



## NORWAY GREY

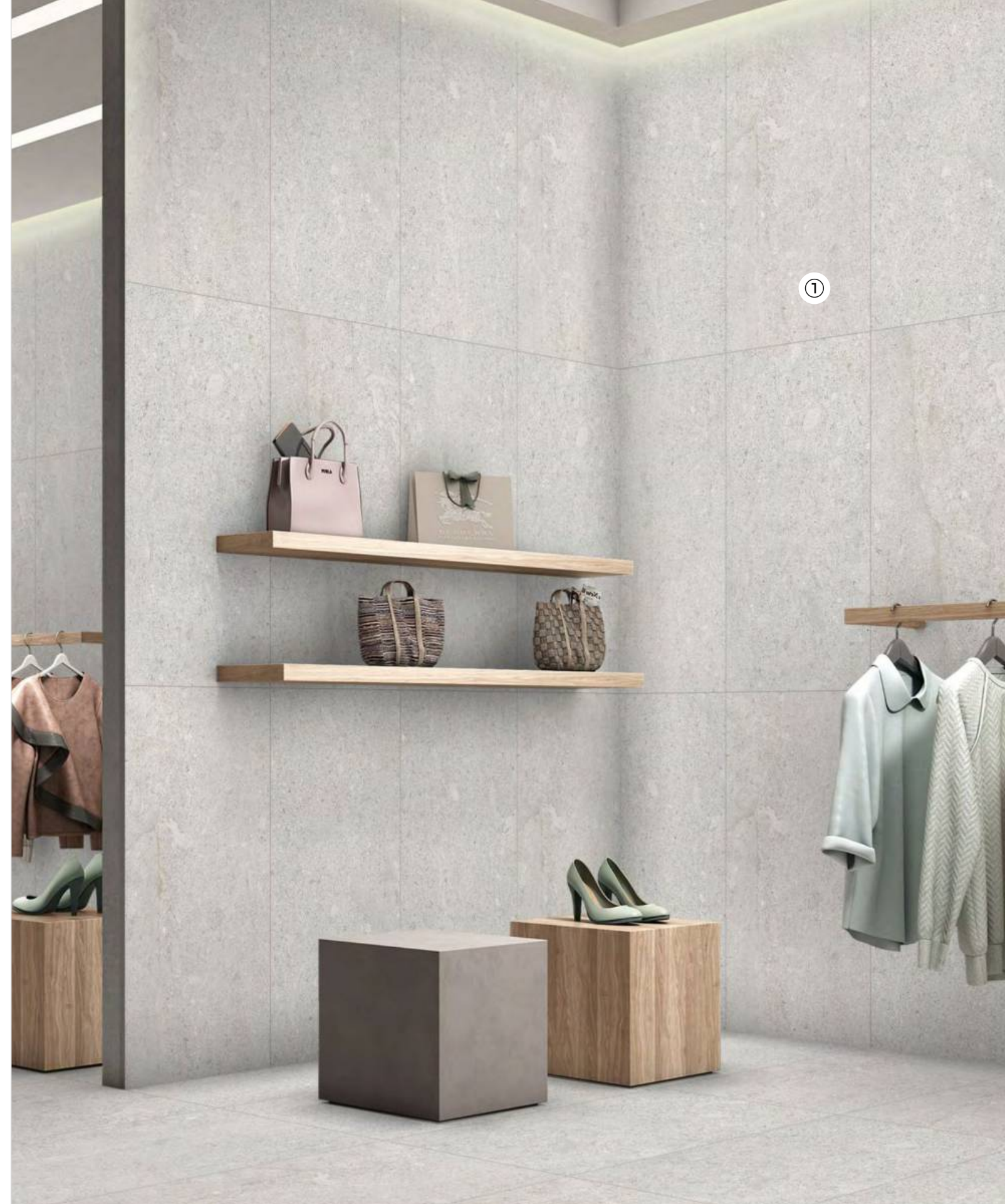


Random - 5

## SONIC HAZE



Random - 6



FULLY DIGITAL  
TECHNOLOGY

①

SONIC HAZE



60X120 CM | 24"X48" | 2'X4'

MATT FINISH

9 mm

GLAZED VITRIFIED TILES

## SONIC LIGHT

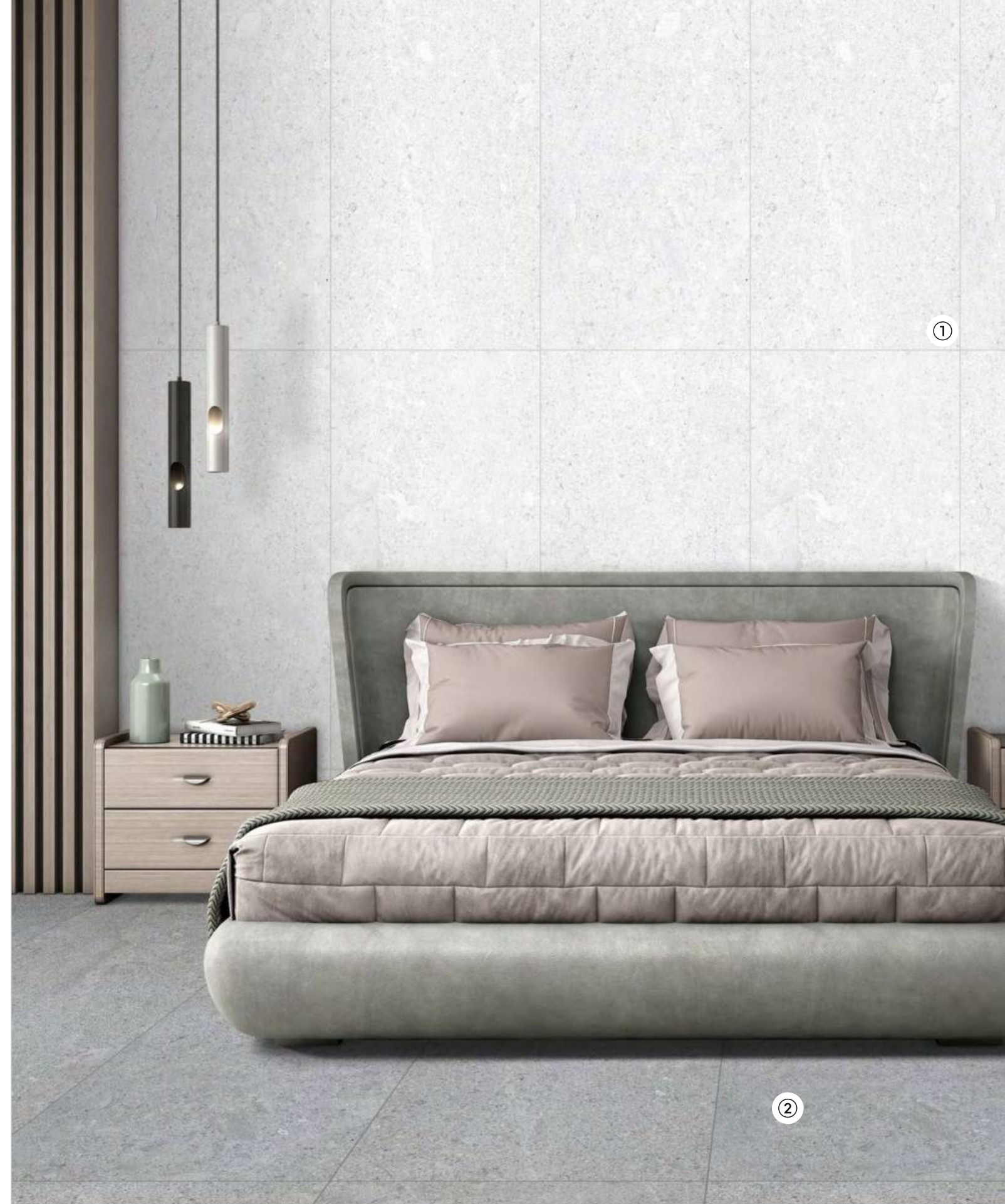


Random - 6

## SONIC SLATE



Random - 6



FULLY DIGITAL  
TECHNOLOGY

①

SONIC  
LIGHT

②

SONIC  
SLATE



## SONIC SAND

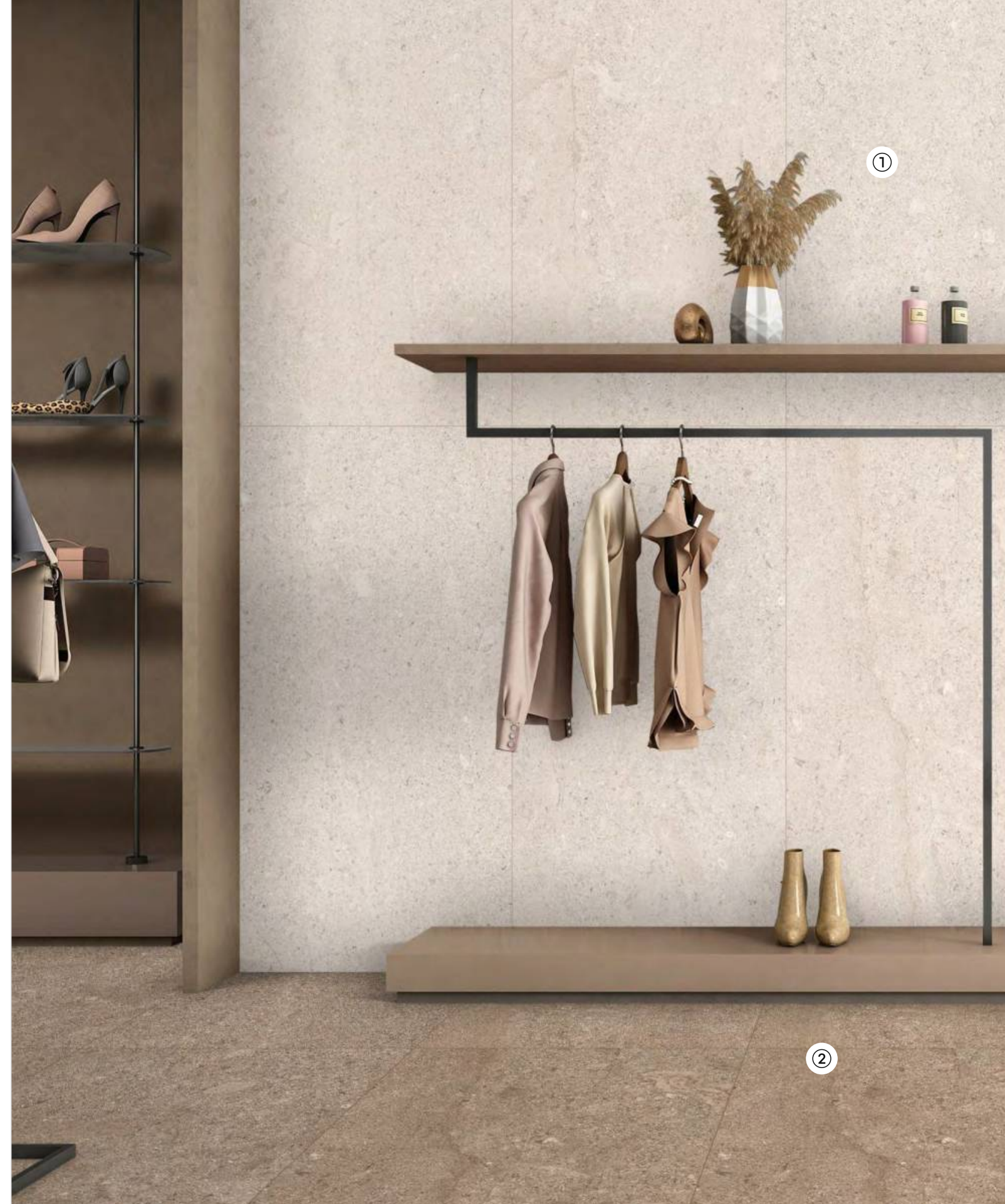


Random - 6

## SONIC BROWN



Random - 6



FULLY DIGITAL  
TECHNOLOGY

①

SONIC  
SAND

②

SONIC  
BROWN



60X120 CM | 24"X48" | 2'X4'

MATT FINISH

≥ 9 mm

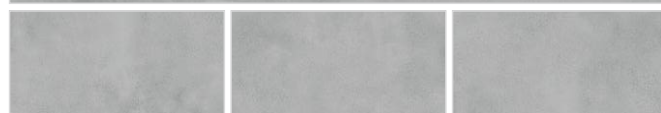
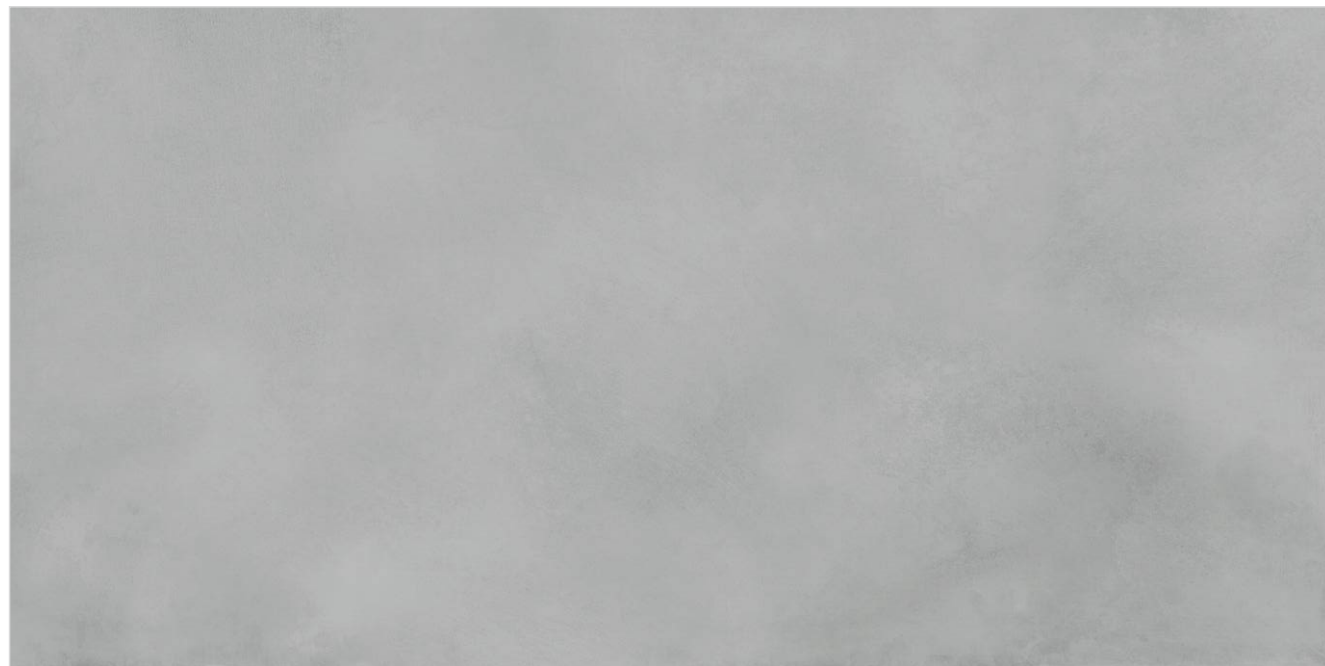
GLAZED VITRIFIED TILES

## BETTON GREY



Random - 8

## AZURE FOSSIL



Random - 4



①



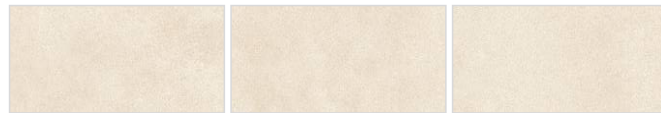
FULLY DIGITAL  
TECHNOLOGY

①

BETTON  
GREY

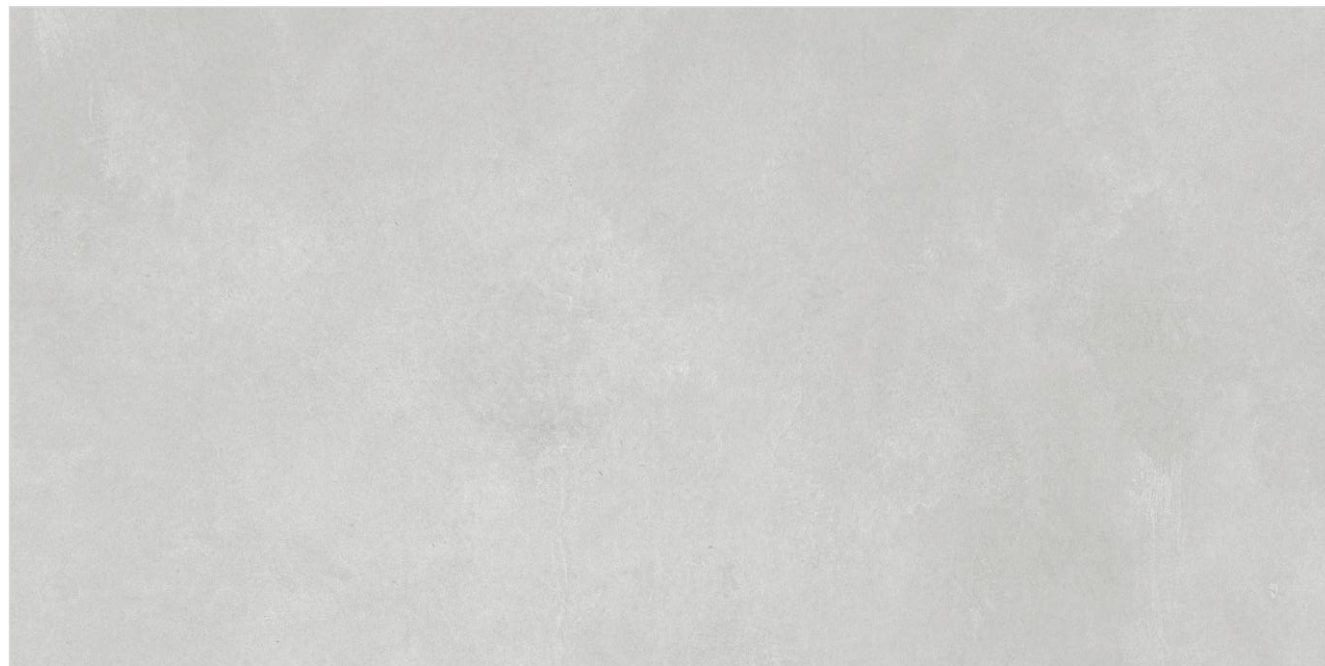


## CONCORDE BEIGE

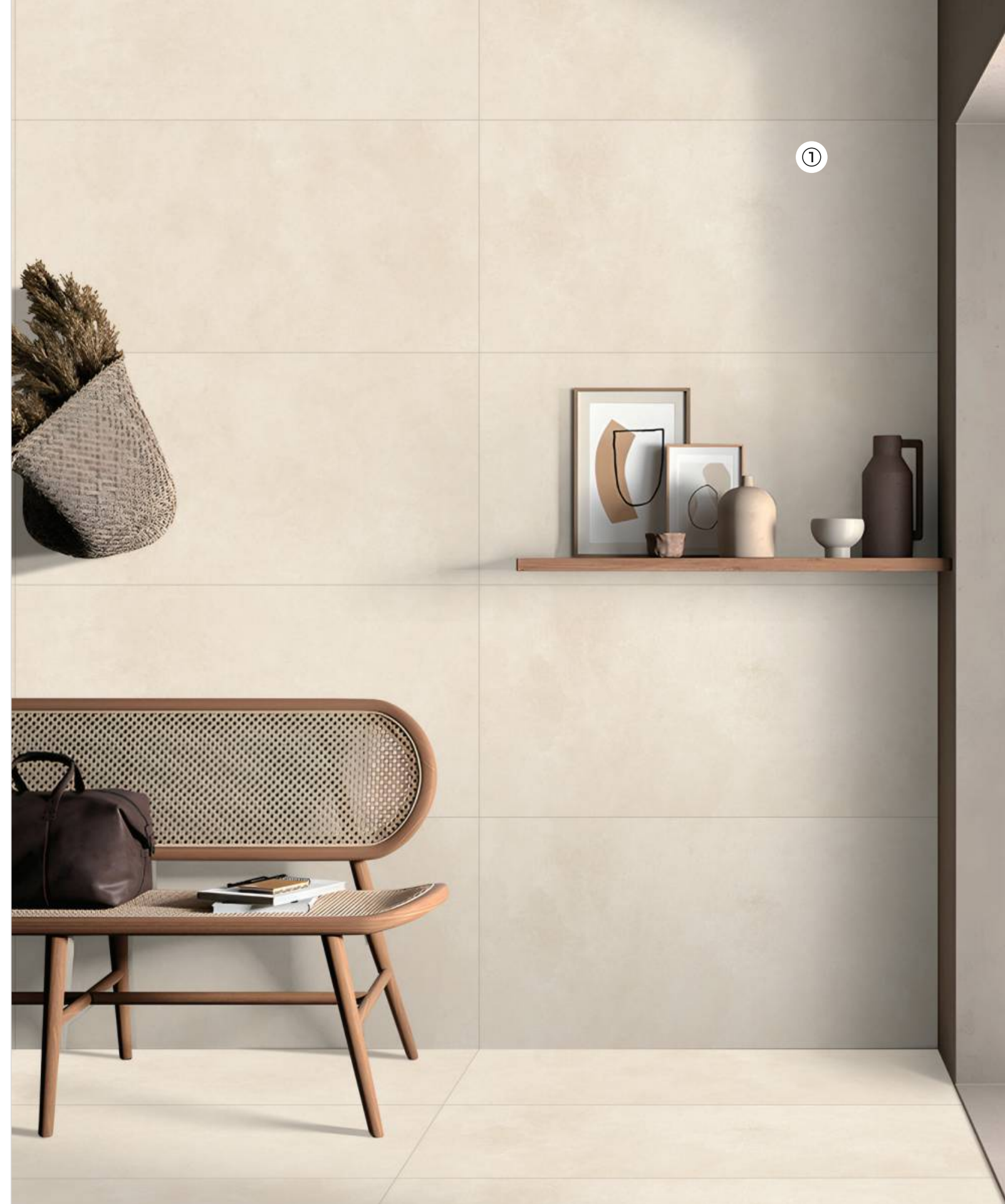


Random - 4

## CONCORDE GRIGIO



Random - 4



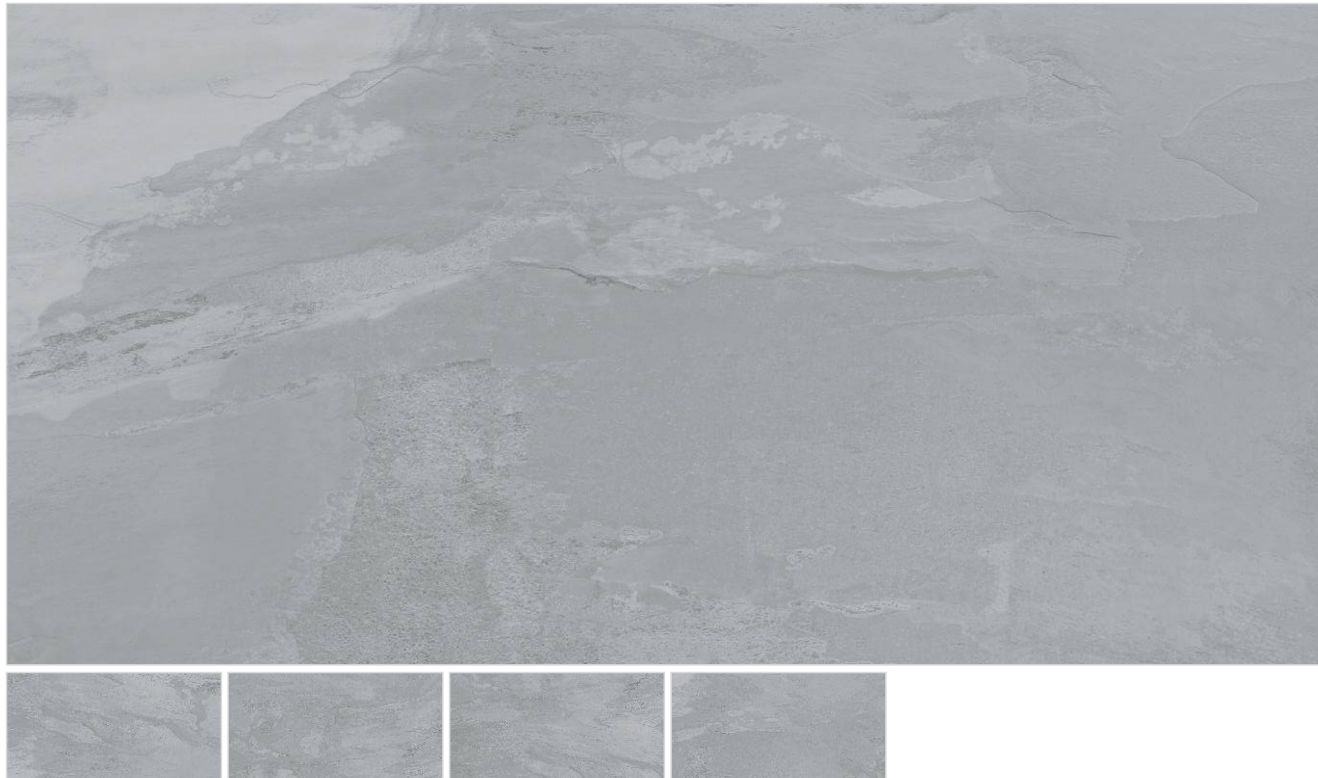
FULLY DIGITAL  
TECHNOLOGY

①

CONCORDE  
BEIGE



## DORIAN GREY



Random - 5

## POLAR GRIS



Random - 4



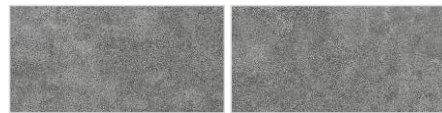
FULLY DIGITAL  
TECHNOLOGY

①

DORIAN  
GREY



## SANDSTONE GRAPHITE

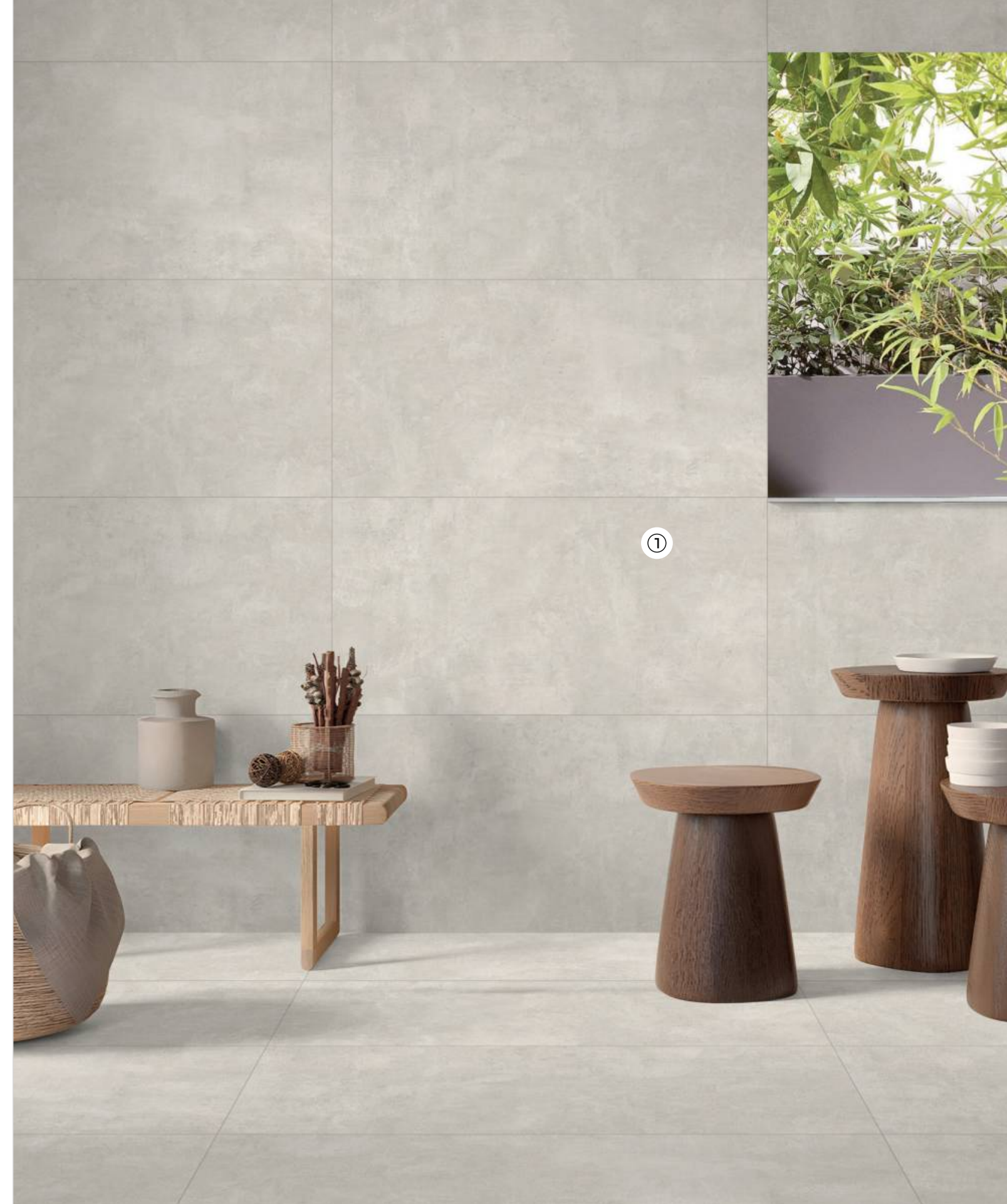


Random - 3

## SANDSTONE PERLA



Random - 3



FULLY DIGITAL  
TECHNOLOGY

①

SANDSTONE  
PERLA

TECHNICAL SPECIFICATION

CHARACTERISTIC	STANDARD AS PER ISO-13006/EN14411 GROUP BIa	MEAN VALUE OF PGVT	MEAN VALUE OF GVT	Method of Testing
REGULATORY PROPERTIES				
Deviation in length & width	± 0.5 %	± 0.1 %	± 0.1 %	ISO-10545-2
Deviation in thickness	± 5.0 %	± 4.0 %	± 4.0 %	ISO-10545-2
Straightness in side	± 0.5 %	± 0.1 %	± 0.1 %	ISO-10545-2
Rectangularity	± 0.6 %	± 0.1 %	± 0.1 %	ISO-10545-2
Surface flatness	± 0.5 %	± 0.2 %	± 0.2 %	ISO-10545-2
Color difference	Unaltered	No change	No change	ISO-10545-16
Glossiness	As per mfg.	Min. 90%	Min. 4%	GLOSSOMETER
STRUCTURAL PROPERTIES				
Water absorption	< 0.50 %	< 0.20 %	< 0.20 %	ISO-10545-3
Apparent density	> 2.0 g/cc	> 2.10 g/cc	> 2.10 g/cc	DIN 51082
MASSIVE MECHANICAL PROPERTIES				
Modulus of rupture	Min. 35 N/mm 2	Min. 40 N/mm 2	Min. 40 N/mm 2	ISO-10545-4
Breaking strength	Min. 1300 N	Min. 2000 N	Min. 2000 N	ISO-10545-4
Impact resistance	As per mfg.	Min. 0.55	Min. 0.55	ISO-10545-5
SURFACE MECHANICAL PROPERTIES				
Surface abrasion resistance	As per mfg	Min. Class-3	Min. Class-4	ISO-10545-7
MOH's hardness	As per mfg	Min. 4	Min. 5	EN 101
THERMO HYGROMETRIC PROPERTIES				
Frost resistance	No damage	No damage	No damage	ISO-10545-12
Thermal shock resistance	No damage	No damage	No damage	ISO-10545-9
Moisture expansion	Nil	Nil	Nil	ISO-10545-10
Thermal expansion (COE)	Max. 9.0 x 10-6	Max. 6.5 x 10-6	Max. 6.5 x 10-6	ISO-10545-8
CHEMICAL PROPERTIES				
Chemical resistance	No damage	No damage	No damage	ISO-10545-13
Stain resistance	Resistant	Resistant	Resistant	ISO-10545-14
SAFETY PROPERTIES				
Slip resistance	As per mfg	> 0.40	> 0.40	ISO-10545-17
Fire resistance	As per mfg	Fireproof	Fireproof	N. A.
Lead & Cadmium giv en off by glazed tiles	As per mfg	Does not yield Pb. & Cd.	Does not yield Pb. & Cd.	ISO-10545-15

PACKING DETAILS

Size	Normal Thickness	No. of Tiles/Box	Coverage Area/Box		Wt. of Box (approx)
60x120cm	9.00 mm	2 pcs	1.44 sq. mtr.	15.50 sq. ft.	28.00 kg



**ETICA OVERSEAS LLP**  
8-A, National highway,  
Morbi-363641 Guj(INDIA)

**+91 99798 55581**

info@eticaceramica.in  
www.eticaceramica.in